

The PC software installation instructions

1. Install the software (the PC software is available in Chinese and English)

Step 1: Select language: English/Chinese.

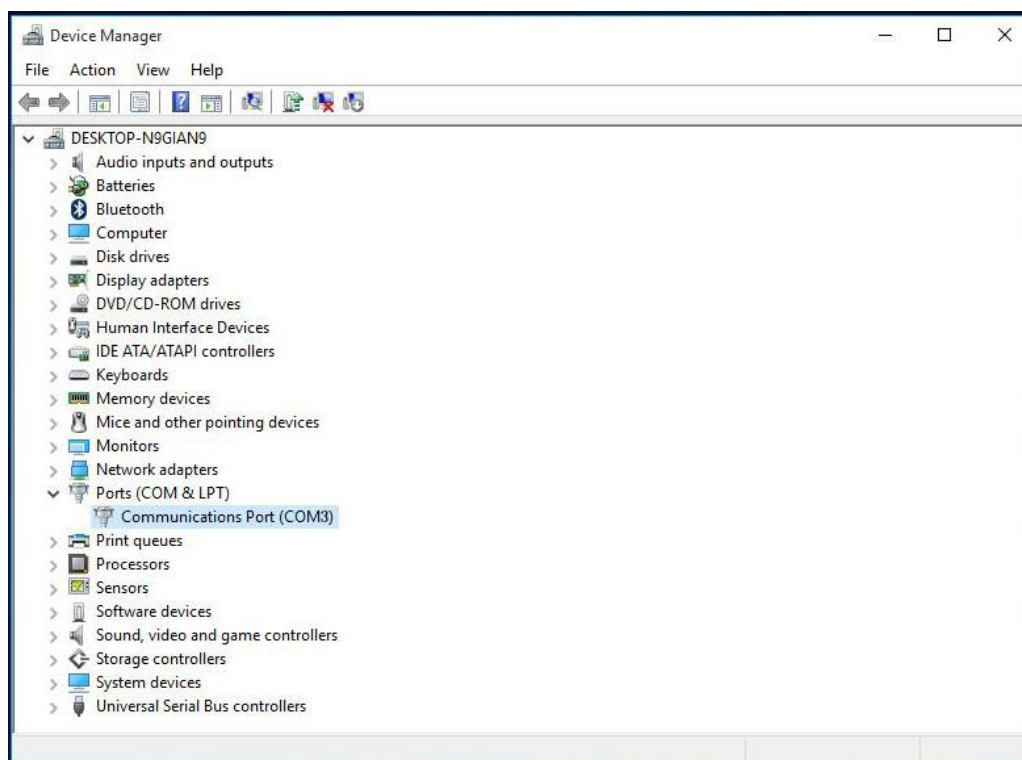
Step 2: Click **【Install USB Drive】** to install the serial port driver.

Step 3: Click **【Main program】** to install the application, keep clicking **【NEXT】**

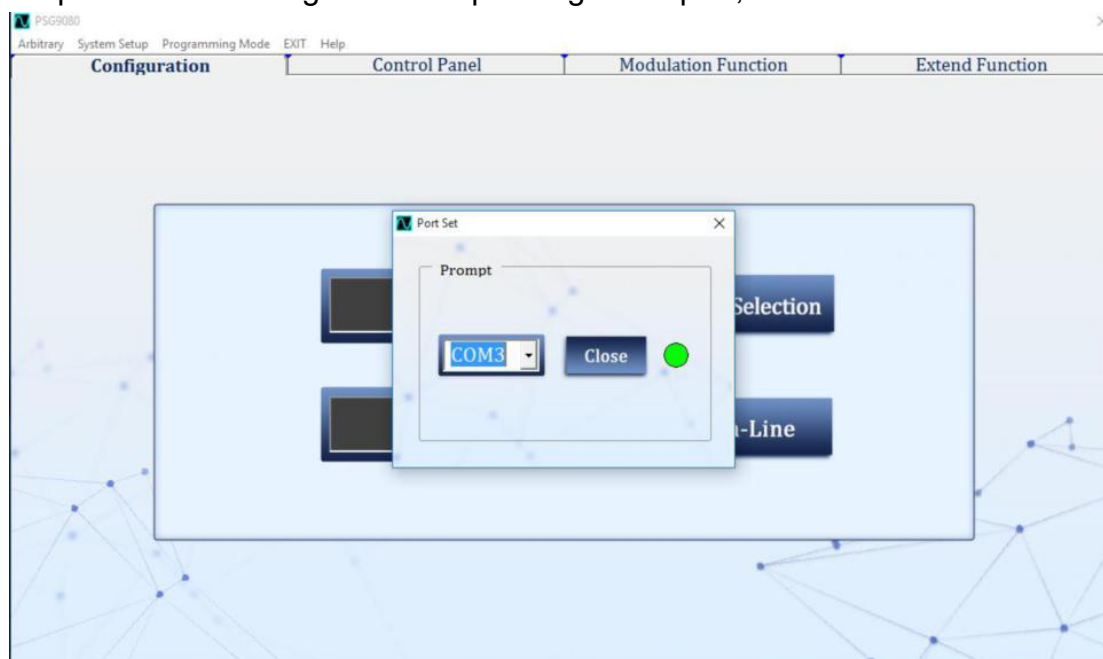
→ click **【FINISH】** to complete the installation.

2. On-line Connection

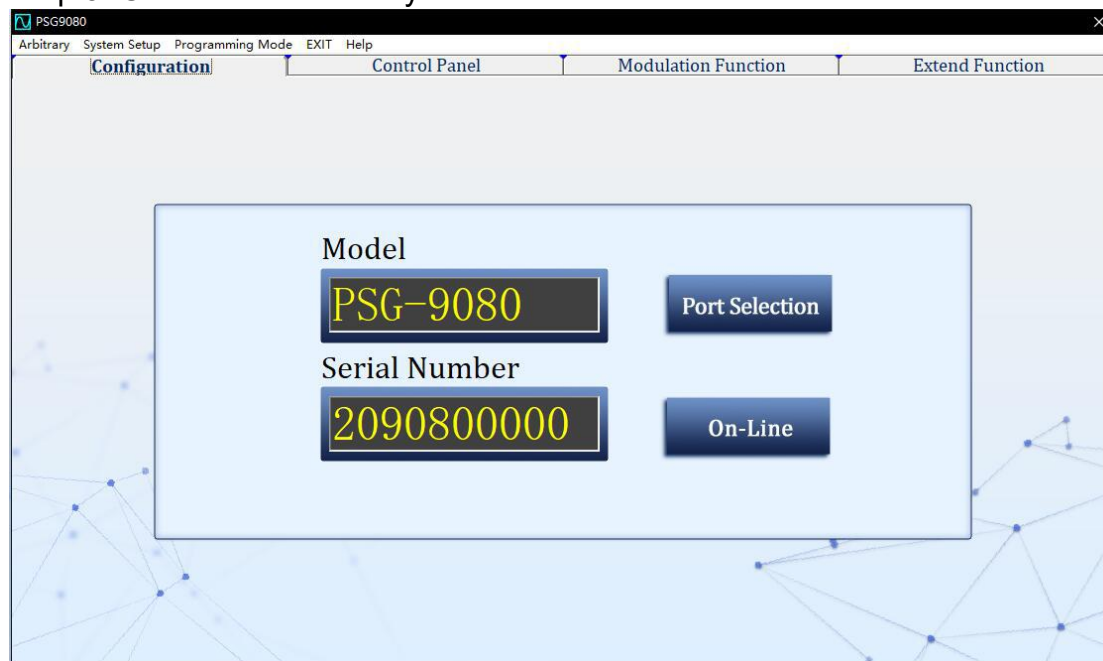
Step 1: Right-click computer → Properties → Device Manager → observe the serial port assigned by the computer.



Step 2: After selecting the corresponding serial port, click online.

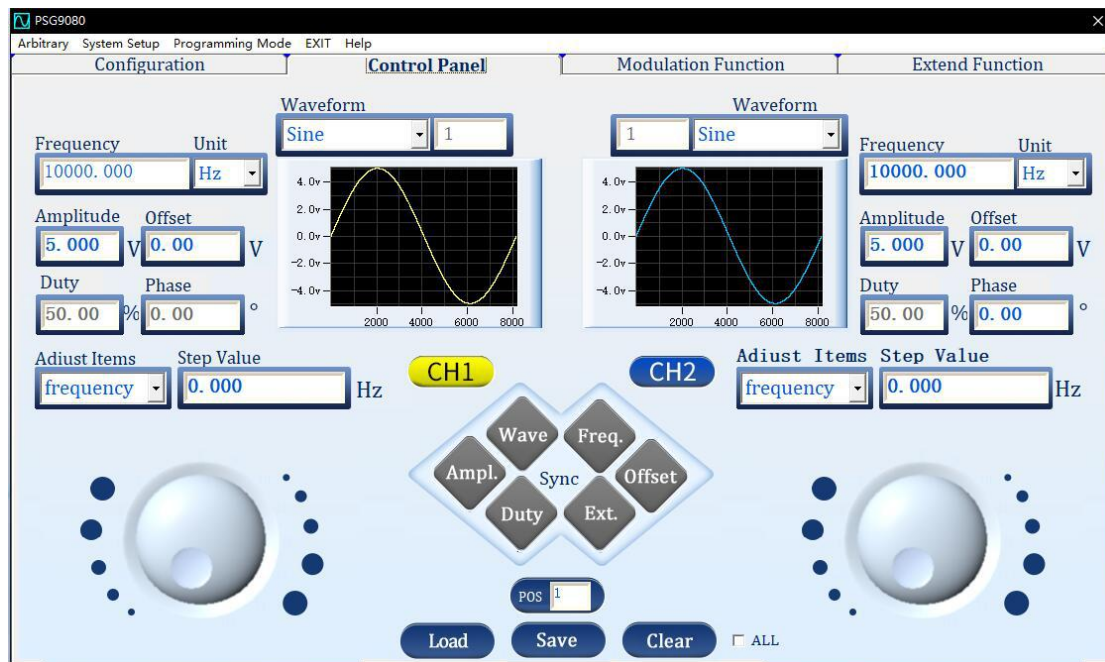


Step 3: Connect successfully.

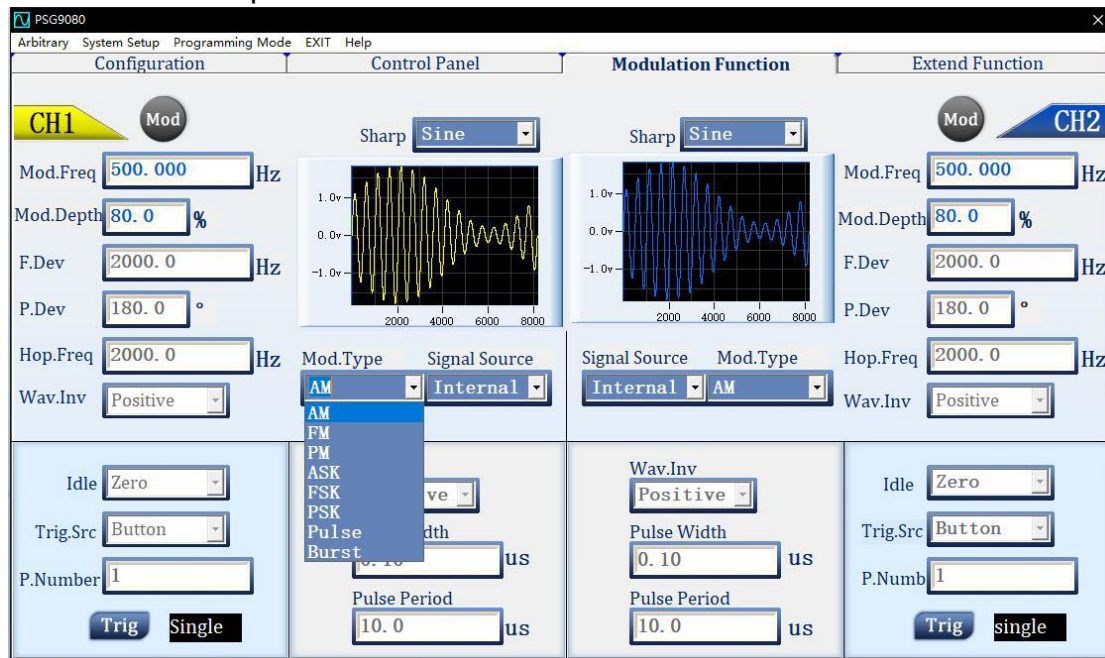


3. The basic operation interface of the PC software

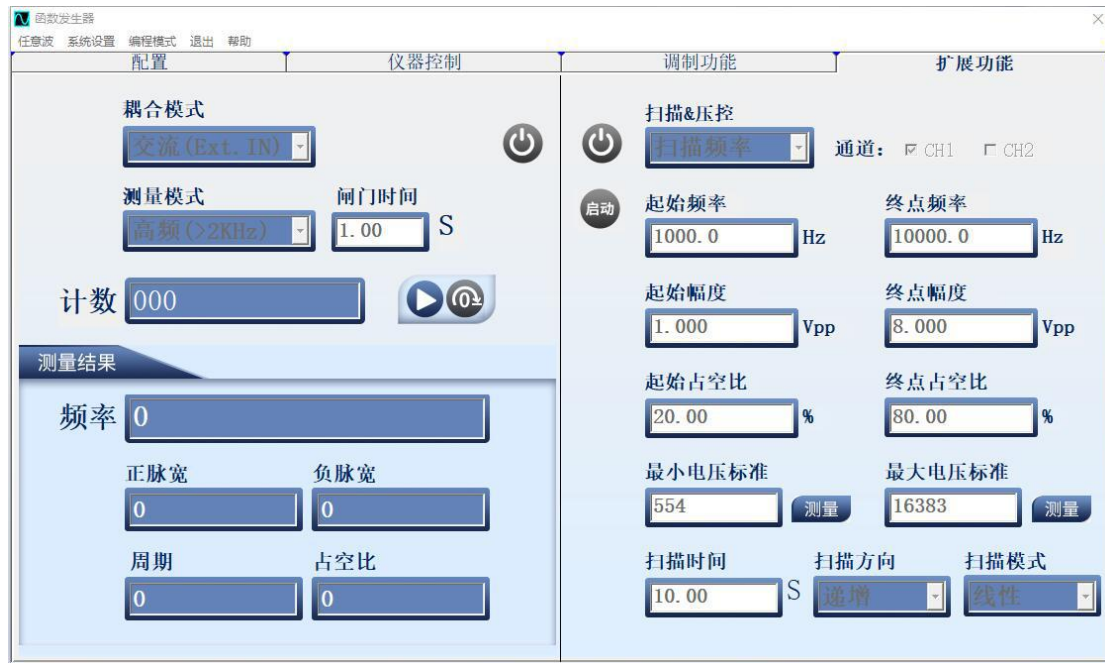
(1) Main control interface: the current output waveforms can be displayed in real time.



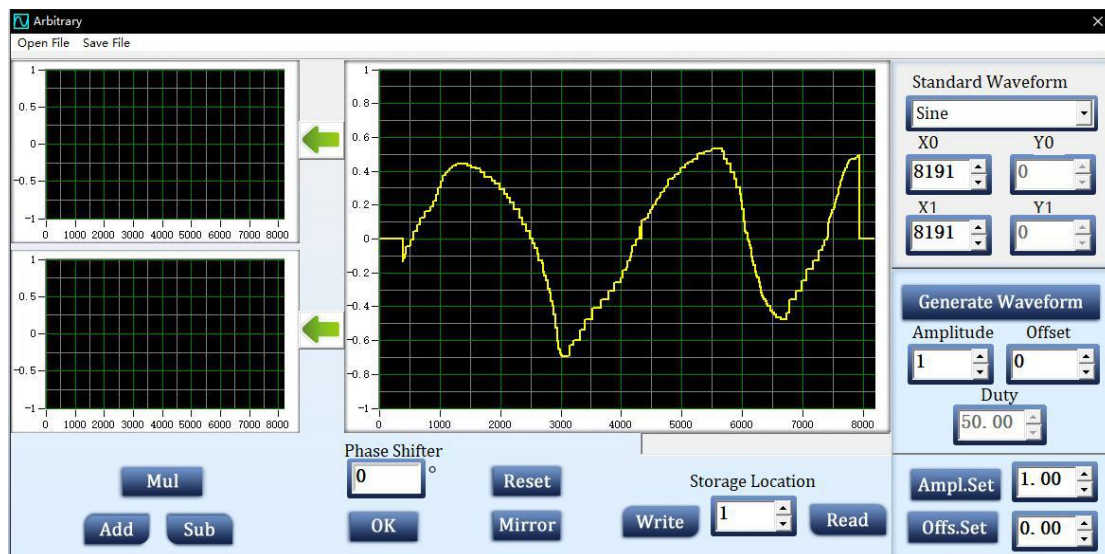
(2) Modulation function interface: AM, FM, PM, ASK, PSK, FSK, Pulse, Burst functions can be performed.



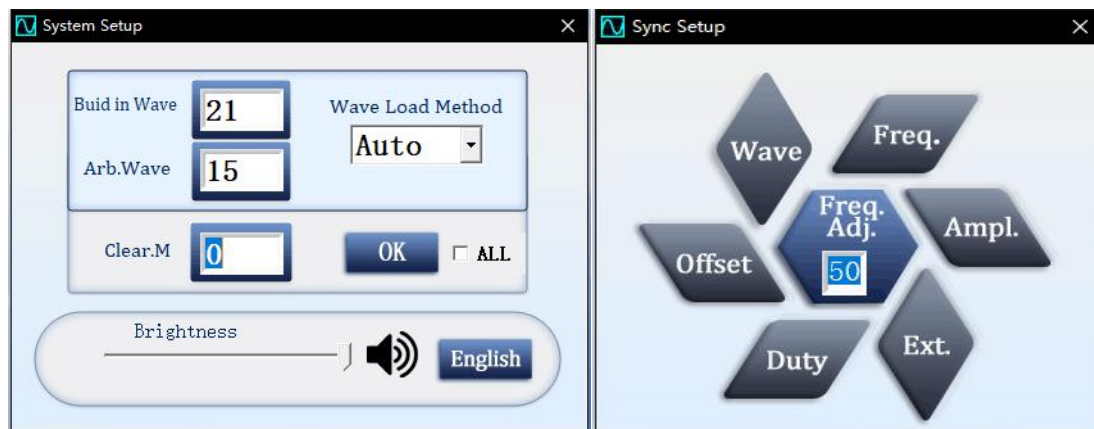
(3) Extended function interface: measurement, counter, sweep and voltage controlled functions can be performed.



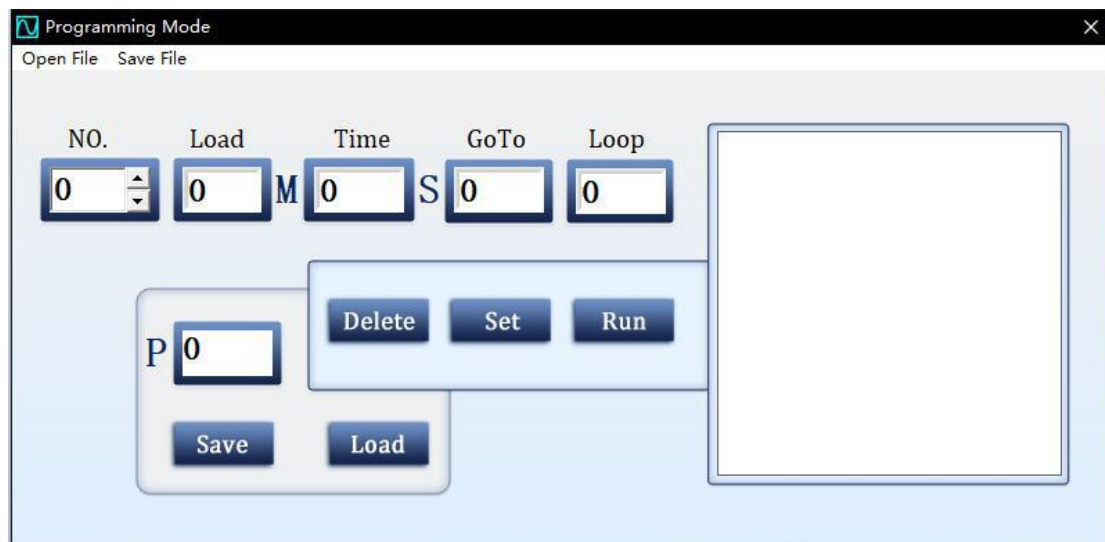
(4) Arbitrary waveform function interface: waveforms can be drawn freely.



(5) System setting interface: the built-in wave number, arbitrary wave number, clear memory, brightness, key sound, Chinese and English system, and the synchronous and asynchronous of CH1/CH2 channel can be set.



(6) Programming function interface



(7) The PC software version

